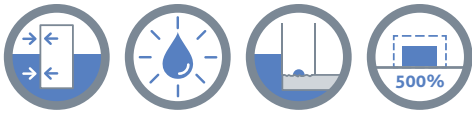


SPETEC® SST500

HYDROPHILIC SYNTHETIC WATERPROOFING STRIP FOR SEALING JOINTS



DESCRIPTION

SPETEC® SST500 is a black hydrophilic synthetic waterproofing strip of 20 x 5 mm and 20 x 10 mm.

SPETEC® SST500 is manufactured in lengths of 10 meter.

SPETEC® SST500 is simply fastened onto an existing joint. In contact with water and in confined conditions, SPETEC® SST500 will swell and stop the water infiltration.

SPETEC® SST500 remains consistent in its performance throughout its life cycle and the flexibility allows it to fill voids and cracks in the immediate surrounding area.

ADVANTAGES

- Ecologically friendly.
- SPETEC® SST500 has a good impact resistance.
- Good overall chemical resistance.
- Permanently active system "wet/dry cycles".
- Easy to install, no special tools required.
- Swells more than 500% when in contact with water.
- Will not sag when correctly placed.
- Due to its flexibility and high swelling capacity, SPETEC® SST500 can absorb movements in the construction.
- Easy to install by nailing or gluing with SPETEC® MSA.
- Good chemical resistance, can resist to petroleum, mineral and vegetable oils and greases

FIELDS OF APPLICATION

SPETEC® SST500 is used in:

- Construction joints in concrete.
- Cold joints.
- Pipe penetrations through concrete.
- Joints between prefabricated pipe elements.
- Joints between pre-casted concrete elements like water tanks and manholes.
- Joints between floor slabs/walls and secant pile walls/slurry walls/ sheet piles...
- Sealing vertical and horizontal construction joints.
- Sealing cold joints between concrete precast elements and tunnel elements.
- Sealing pipe penetrations.
- Not suitable for expansion joints.

APPLICATION

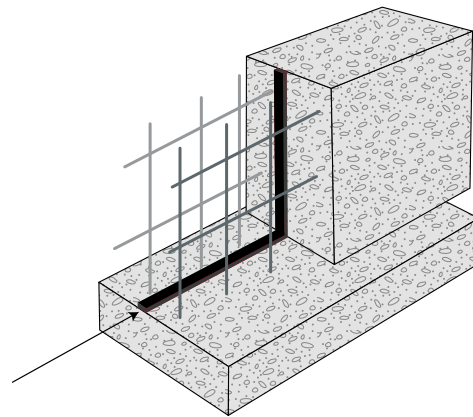
Note : the following is a typical application description. In case of other jobsite parameters, please contact our technical department.

PREPARATION OF THE SUBSTRATE

Clean all surfaces from dust, oil patches and other debris by brushing or compressed air.

PREPARATION OF THE PRODUCT

- Install SPETEC® SST500 in the middle of the joint.
- There should be a minimum concrete cover of 6cm on either side of the strip, this to avoid the concrete to chip off when the strip expands.
- SPETEC® SST500 needs to be in full contact with the substrate surface.
- SPETEC® SST500 only functions in confined spaces where it can develop sufficient internal pressure to guarantee the complete waterproofing of joint or crack.
- SPETEC® SST500 needs to be fixed to the surface by gluing (SPETEC® MSA) or nailing (every 30cm).
- Unroll SPETEC® SST500 and press firmly to make sure the strip is in contact with the surface.
- Sealing of the joint is obtained by the swelling of the strip.
- Avoid installing the strip during heavy rain or on wet surfaces. This can result in premature swelling of the strip.
- Avoid stretching the strip during installation.



ADVICE / FOCAL POINTS

SPETEC® SST500 only functions in confined spaces where it can develop sufficient internal pressure to guarantee the complete waterproofing of joint or crack.
Roll ends are simply butted together to assure a waterproof seal. Do not install in overlap.
Avoid installing the strip during heavy rain or on wet surfaces. This can result in premature swelling of the strip.

REQUIRED TOOLS

No special tools are required.

COMPLIMENTARY PRODUCTS

To be ordered separately



Adhesive SPETEC® MSA 310ml cartridges

- SPETEC® MSA (see respective TDS)
- 12 cartridges per cardboard box
- 75 cardboard boxes = pallet

TECHNICAL DATA

APPEARANCE - COMPOSITION

SPETEC® SST500 is a black hydrophilic synthetic waterproofing strip.

Shape	Rectangular
Colour	Black
Toxicity	Nontoxic

TECHNICAL DATA

Property	Value	Norm
Swelling capacity	>400%	Internal test report
Density	1,22 kg/dm ³	ASTM D71-84
Hardness	Approx. 50	Internal test report
Hydrostatic pressure resistance	7 bar	Internal test report
Elongation at break	>400%	Internal test report
Installation temperatures	-20°C to +75°C	Internal test report
Tensile strength	>2MPa	Internal test report
Odour	Odourless	

CHEMICAL RESISTANCE

Good chemical resistance also to hydrocarbons.
For contact with polluted water or specific chemicals, it is recommended to consult the SPETEC® representative.

CONSUMPTION

The consumption depends on the total length of the construction joint that needs to be sealed.

PACKAGING

20 x 5 mm:
10 meter rolls, 5 rolls per box, 60 boxes per pallet. (3000 meter)

20 x 10 mm:
10 meter rolls, 9 rolls per box, 24 boxes per pallet. (2160 meter)

STORAGE & SHELF LIFE

SPETEC® SST500 should be stored under cover, clear of the ground. Protect the materials from all sources of moisture and frost. Storage temperature must be between + 5°C and 30°C. Shelf life is unlimited in correct storage conditions.

SAFETY PRECAUTIONS

Consult the Material Safety Data Sheet.

Note: the information and recommendations provided in this technical data sheet is given in good faith and based on laboratory test and on the job experience of the manufacturer. In practice, site conditions and substrates might be such that the manufacturer cannot warrant the fitness for each individual purpose. The user of the product must test the product for its intended use and ascertain himself that the product will work under the specific conditions of the jobsite. The manufacturer does not accept any liability based on the content of the technical data sheet. The user must verify that he holds the latest version of the technical data sheet. The manufacturer reserves the right to change the properties of the product. Products must be properly stored, handled and applied in line with manufacturer's recommendations. Version 1.0 Date: 23 November 2017 2:51 PM